

# TERRANO 600X30MM 2650LM 840 II CL. WHITE 60D (18W)

DETAILED CARD



## TECHNICAL PARAMETERS

Light source:	LED module
Rated power of the luminaire [W]*:	18
Luminous flux [lm]*:	2650
Supply voltage [V]:	220-240
Energy efficiency class:	G
Electrical protection class:	II
Colour temperature [K]:	4000
Colour of the body:	white
Dimensions (H/W/T/S) [mm]:	17/568/33

## CHARACTERISTICS

The new linear luminaire in the form of a compact louver with LEDs and focusing lenses enables extremely effective glare reduction (UGR between 12 and 19). Terrano luminaires are characterised by excellent performance and many conveniences. Above all, it can be installed quickly on the supporting structure of a modular ceiling. The same luminaire can be relocated just as quickly. Changing the location will leave no trace of the mounting holes. For convenience and aesthetics, the luminaire has an extra-thin power cable, which fits between the structure and the ceiling tile. Terrano, a plastic luminaire in a slim steel housing, is available in two colour temperatures, 3000 K and 4000 K, and in two colours, white and black.

## APPLICATION

Terrano can be fitted directly into modular ceiling profiles to provide general lighting, but can also be used to spotlight selected elements of a space. Terrano will become both a striking element of modern arrangements where lighting plays a key role and a complement to subtle, minimalist spaces.

\*DUO- version of double lamp on one power supply

# TERRANO 600X30MM 2650LM 840 II CL. WHITE 60D (18W)

DETAILED CARD

## TECHNICAL PARAMETERS TABLE

Index:	937019	Diffuser type:	matrix led
EAN:	5905963937019	Diffuser colour:	transparent
Light source:	LED module	Optics:	lens
Rated power of the luminaire [W]:	18	Optics material:	PMMA
Colour of the body:	white	Material of the body:	powder coated steel
Luminous flux [lm]:	2650	Dimensions (H/W/T/S) [mm]:	17/568/33
Colour temperature [K]:	4000	Ingress protection:	IP20
Supply voltage [V]:	220-240	Mounting version:	to T-profile ceilings suspended
Frequency [Hz]:	50-60	Working temperature [°C]:	from -10 to +35
Luminous efficacy [lm/W]:	147	LED lifespan L70B50 [h]:	150000
Energy efficiency class:	G	LED lifespan L80B20 [h]:	100000
Electrical protection class:	II	LED lifespan L90B10 [h]:	50000
Colour rendering index:	>80	Net weight [kg]:	0.390
SDCM:	≤ 3	Manual:	<a href="#">Download PDF</a>
Beam angle [°]:	60	CE certificate:	<a href="#">68/2025</a>
Light distribution type:	symmetric	Category type:	louvres
Surge protection [kV]:	1	Pliik LDT:	<a href="#">Download</a>
Diffuser material:	PMMA		

## LIGHT CURVES



# TERRANO 600X30MM 2650LM 840 II CL. WHITE 60D (18W)

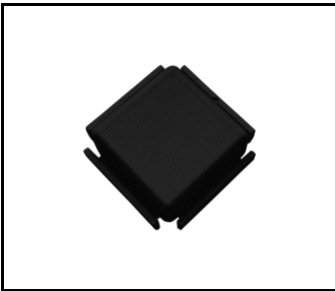
DETAILED CARD

## ACCESSORIES AVAILABLE

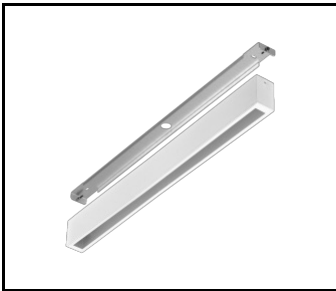
index	Name
937408	Terrano white connector
937415	Terrano black connector
420931	Terrano surface frame white gloss RAL9003 573x38x60
420948	Terrano surface frame black mat RAL9005 573x38x60



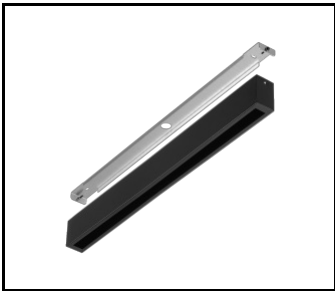
Terrano white connector (937408)



Terrano black connector (937415)



Terrano surface frame white gloss  
RAL9003 573x38x60 (420931)



Terrano surface frame black mat  
RAL9005 573x38x60 (420948)

Card creation date: 02 June 2025

The company reserves the right to make design changes or upgrades in the presented product. Product data sheet does not constitute an offer. \* Parameter tolerance is +/- 10%

 This product is a subject to electric and electronic waste equipment regulations (WEEE).

 Certificate CE - Nr: 68/2025



Lena Lighting S.A.  
ul. Kórnicka 52, 63-000 Środa Wielkopolska  
tel. +48 61 28 60 333 (Pn-Pt, 8-16), e-mail: hello@lenalighting.pl, www.lenalighting.pl