

# INDUSTRY SLIM LED 590MM 4450LM 850 IP66 105D LS2 (33W)

---

DETAILED CARD



# INDUSTRY SLIM LED 590MM 4450LM 850 IP66 105D LS2 (33W)

DETAILED CARD

## TECHNICAL PARAMETERS

<b>Ingress protection:</b>	IP66
<b>Rated power of the luminaire [W]*:</b>	33
<b>Luminous flux [lm]*:</b>	4450
<b>Colour temperature [K]:</b>	5000
<b>Material of the body:</b>	aluminium
<b>Colour of the body:</b>	grey
<b>Diffuser material:</b>	PC
<b>Diffuser type:</b>	OPAL
<b>Mounting version:</b>	surface, suspended

## CHARACTERISTICS

Industry Slim Led - a brand new industrial luminaire is characterized by high luminous flux and very high luminous efficiency >160 lm/W, which makes this luminaire highly energy-efficient and environmentally friendly. It is distinguished by its very high IP66 tightness. It owes this tightness to its well-thought-out design. The polycarbonate diffuser is permanently attached to the housing with a durable silicone gasket. This means that in addition to the tightness thus achieved, the light module is protected from uncontrolled interference and access to the LEDs. The tightness of the lamp, is ensured by the gland, which screwed tightens the gasket and prevents the penetration of dust or moisture and water. Industry Slim Led allows for pendant or surface mounting.

## APPLICATION

The luminaire is designed to illuminate industrial and warehouse facilities, due to its minimal dimensions, also in hard-to-reach places. The Industry Slim Led luminaire is available in various versions: with different optics, wide, narrow, and dedicated to high-bay light distribution, and five types of the diffuser, including an anti-glare diffuser.

## DETAILS



# INDUSTRY SLIM LED 590MM 4450LM 850 IP66 105D LS2 (33W)

DETAILED CARD

## TECHNICAL PARAMETERS TABLE

Index:	933660	Diffuser material:	PC
EAN:	5905963933660	Material of the body:	aluminium
Rated power of the luminaire [W]:	33	Colour of the body:	grey
Luminous flux [lm]:	4450	Dimensions (H/W/T/S) [mm]:	651/50/75
Supply voltage [V]:	220 - 240	Ingress protection:	IP66
Frequency [Hz]:	50 - 60	Impact resistance:	IK09
Luminous efficacy [lm/W]:	135	Mounting version:	surface, suspended
Energy efficiency class:	D	Working temperature [°C]:	from -25 to +35
Electrical protection class:	I	Wire type:	5x1,5
Colour temperature [K]:	5000	Through wiring:	LS2
Colour rendering index:	>80	Net weight [kg]:	1.500
SDCM:	≤ 3	Warranty [years]:	5
LED lifespan L70B50 [h]:	99000	CE certificate:	<a href="#">167/2023</a>
LED lifespan L80B20 [h]:	63000	ENEC Certificate:	<a href="#">0362/ENEC/24</a>
LED lifespan L90B10 [h]:	31000	Manual:	<a href="#">Download PDF</a>
Beam angle [°]:	105		

## LIGHT CURVES

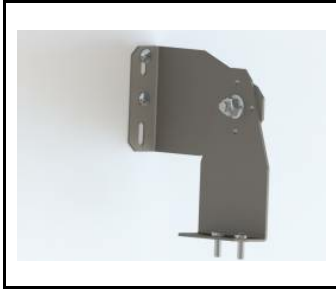


# INDUSTRY SLIM LED 590MM 4450LM 850 IP66 105D LS2 (33W)

DETAILED CARD

## ACCESSORIES AVAILABLE

index	Name
908200	TYTAN LED. ATLAS LED. INDUSTRY LED - adjustable handle (set of 2)
60000006	M16 stuffing box plug various PA black M-16 - BPM-21



TYTAN LED. ATLAS LED. INDUSTRY LED - adjustable handle (set of 2) (908200)



M16 stuffing box plug various PA black M-16 - BPM-21 (60000006)

Card creation date: 05 August 2024

The company reserves the right to make design changes or upgrades in the presented product. Product data sheet does not constitute an offer. \* Parameter tolerance is +/- 10%

 This product is a subject to electric and electronic waste equipment regulations (WEEE).

 Certificate CE - Nr: 167/2023