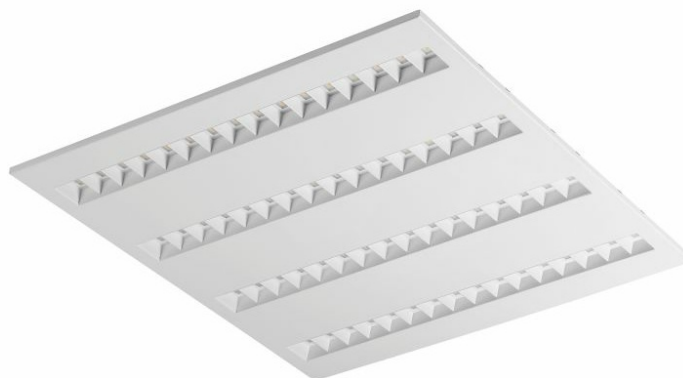


TERRA 2 LED N-MAG 595X595MM X4 7600LM 830 WHITE MAT (72W)

DETAILED CARD



TECHNICAL PARAMETERS

| | |
|-----------------------------------|-----------------------|
| Index: | 991103 |
| Ingress protection: | IP20 |
| Nominal power [W]: | 72 |
| Luminous flux [lm]*: | 7600 |
| Colour rendering index: | >80 |
| SDCM: | ≤ 3 |
| Material of the body: | powder coated steel |
| Optics: | HE |
| Mounting version: | surface (magnet ver.) |
| Dimensions (H/W/T/S) [mm]: | 595/595/36 |

CHARACTERISTICS

Recessed square LED luminaire with high total luminous Flux. Made of powder-coated white steel sheet. The luminaire has a patented HE reflector installed, which ensures efficiency and effectively eliminates glare. Available mounting versions: surface mounted, surface mounted on neodymium magnets (magnet ver. / N-MAG), flush-mounted in modular or KG ceilings (using an adapter), or suspended. In the surface-mounted version, solutions influencing the speed and safety of installation were used. In addition, the versions with neodymium magnets shorten the installation time of surface-mounted versions to an absolute minimum. UGR <19

Unified Glare Rating is an indicator characterizing glare. The lower the Unified Lighting Rating Index (UGR), the lower the glare. In the case of luminaires designed for office spaces, UGR <19, among others improves the comfort of work, reduces errors and fatigue. The UGR value also depends on many factors characterizing the room and the location of the observer. Special computer programs should be used to precisely determine the degree of glare for specific conditions.

APPLICATION

General-purpose recessed luminaire for indoor application in offices or other utility rooms. Appropriate as the main light source even when the work requires eyesight concentration.

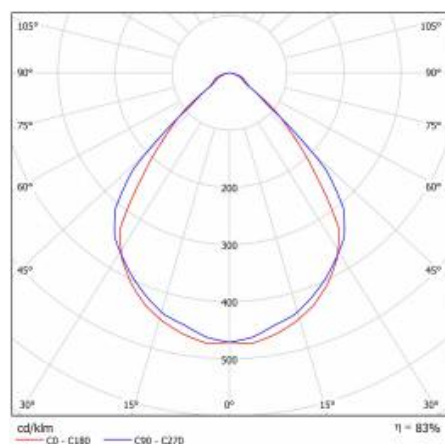
TERRA 2 LED N-MAG 595X595MM X4 7600LM 830 WHITE MAT (72W)

DETAILED CARD

TECHNICAL PARAMETERS TABLE

| | | | |
|-----------------------------------|-----------------------|------------------------------|------------------------------|
| Nominal power [W]: | 72 | Energy efficiency class: | E |
| Index: | 991103 | Electrical protection class: | II |
| Colour temperature [K]: | 3000 | Colour rendering index: | >80 |
| Light source: | LED module | SDCM: | ≤ 3 |
| Luminous flux [lm]: | 7600 | Power factor: | 0.96 |
| Optics: | HE | Material of the body: | powder coated steel |
| Rated power of the luminaire [W]: | 79.70 | Ingress protection: | IP20 |
| Colour of the body: | white mat | Working temperature [°C]: | from -20 to +35 |
| Supply voltage [V]: | 220 - 240 | Category type: | louvres |
| Frequency [Hz]: | 50 - 60 | LED lifespan L70B50 [h]: | 132000 |
| Version: | 4x1 | LED lifespan L80B20 [h]: | 84000 |
| Dimensions (H/W/T/S) [mm]: | 595/595/36 | LED lifespan L90B10 [h]: | 42000 |
| Mounting version: | surface (magnet ver.) | CE certificate: | 249/2023 |
| Luminous efficacy [lm/W]: | 95 | Manual: | Download PDF |

LIGHT CURVES



TECHNICAL DETAILS



TERRA 2 LED

TERRA 2 LED N-MAG 595X595MM X4 7600LM 830 WHITE MAT (72W)

DETAILED CARD

ACCESSORIES AVAILABLE

| index | Name |
|--------|--|
| 999543 | Plasterboard recessing kit 630x630 white (steel version) |
| 374845 | Frame adapter KG 635x635 WHITE |
| 998966 | Frame steel white structure RAL9016 600x600 SM "well effect" |



Plasterboard recessing kit 630x630 white (steel version) (999543)



Frame steel white structure RAL9016 600x600 SM "well effect" (998966)

Card creation date: 19 June 2024

The company reserves the right to make design changes or upgrades in the presented product. Product data sheet does not constitute an offer. * Parameter tolerance is +/- 10%



This product is a subject to electric and electronic waste equipment regulations (WEEE).



Certificate CE - Nr: 249/2023