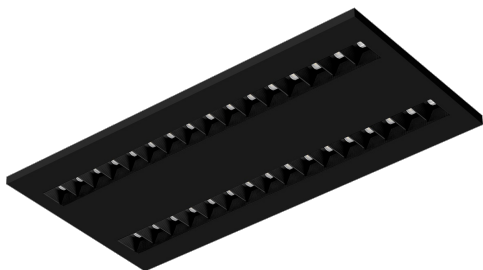


# TERRA 2 LED N 595X300MM X2 3700LM 830 BLACK MAT STRUCTURE (48W)

DETAILED CARD



## TECHNICAL PARAMETERS

Index:	990748
Ingress protection:	IP20
Nominal power [W]:	48
Luminous flux [lm]*:	3700
Colour rendering index:	80
SDCM:	≤ 3
Material of the body:	powder coated steel
Mounting version:	surface (magnet ver.)
Dimensions (H/W/T/S) [mm]:	595/300/36

## CHARACTERISTICS

LED luminaire with high total luminous Flux. Made of powder-coated white steel sheet. The luminaire has a patented HE reflector installed, which ensures efficiency and effectively eliminates glare. Available mounting versions: surface mounted, surface mounted on neodymium magnets (magnet ver. / N-MAG), flush-mounted in modular or KG ceilings (using an adapter) or suspended. In the surface-mounted version, solutions influencing the speed and safety of installation were used. In addition, the versions with neodymium magnets shorten the installation time of surface-mounted versions to an absolute minimum.

## APPLICATION

General purpose surface mounted luminaire for indoor application in offices or other utility rooms. Appropriate as the main light source even when the work requires eyesight concentration.

# TERRA 2 LED N 595X300MM X2 3700LM 830 BLACK MAT STRUCTURE (48W)

DETAILED CARD

## TECHNICAL PARAMETERS TABLE

Index:	990748
Light source:	LED module
Nominal power [W]:	48
Rated power of the luminaire [W]:	53.40
Supply voltage [V]:	220 - 240
Frequency [Hz]:	50 - 60
Luminous flux [lm]:	3700
Luminous efficacy [lm/W]:	69
Energy efficiency class:	G
Electrical protection class:	II
Colour temperature [K]:	3000
Colour rendering index:	80
SDCM:	≤ 3
Power factor:	0.97
Optics:	black HE

Material of the body:	powder coated steel
Colour of the body:	black mat
Dimensions (H/W/T/S) [mm]:	595/300/36
Ingress protection:	IP20
Mounting version:	surface (magnet ver.)
Working temperature [°C]:	from -20 to +35
Category type:	troffers
Category of application:	educational institutions, commercial facilities
Version:	2x1
LED lifespan L70B50 [h]:	132000
LED lifespan L80B20 [h]:	84000
LED lifespan L90B10 [h]:	42000
CE certificate:	<a href="#">354/2023</a>
Manual:	<a href="#">Download PDF</a>

Card creation date: 03 March 2025

The company reserves the right to make design changes or upgrades in the presented product. Product data sheet does not constitute an offer. \* Parameter tolerance is +/- 10%

 This product is a subject to electric and electronic waste equipment regulations (WEEE).

 Certificate CE - Nr: 354/2023



Lena Lighting S.A.  
ul. Kórnicka 52, 63-000 Środa Wielkopolska  
tel. +48 61 28 60 333 (Pn-Pt, 8-16), e-mail: [hello@lenalighting.pl](mailto:hello@lenalighting.pl), [www.lenalighting.pl](http://www.lenalighting.pl)