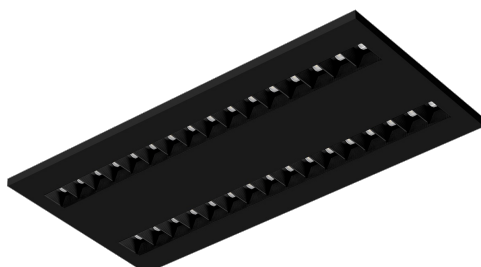


# TERRA 2 LED N-MAG 595X300MM X2 3200LM 830 BLACK MAT STRUCTURE (41W)

DETAILED CARD



## TECHNICAL PARAMETERS

<b>Index:</b>	990731
<b>Ingress protection:</b>	IP20
<b>Nominal power [W]:</b>	41
<b>Luminous flux [lm]*:</b>	3200
<b>Colour rendering index:</b>	>80
<b>SDCM:</b>	≤ 3
<b>Material of the body:</b>	powder coated steel
<b>Mounting version:</b>	surface (magnet ver.)
<b>Dimensions (H/W/T/S) [mm]:</b>	595/300/36

## CHARACTERISTICS

LED luminaire with high total luminous Flux. Made of powder-coated white steel sheet. The luminaire has a patented HE reflector installed, which ensures efficiency and effectively eliminates glare. Available mounting versions: surface mounted, surface mounted on neodymium magnets (magnet ver. / N-MAG), flush-mounted in modular or KG ceilings (using an adapter) or suspended. In the surface-mounted version, solutions influencing the speed and safety of installation were used. In addition, the versions with neodymium magnets shorten the installation time of surface-mounted versions to an absolute minimum.

## APPLICATION

General purpose surface mounted luminaire for indoor application in offices or other utility rooms. Appropriate as the main light source even when the work requires eyesight concentration.

# TERRA 2 LED N-MAG 595X300MM X2 3200LM 830 BLACK MAT STRUCTURE (41W)

DETAILED CARD

## TECHNICAL PARAMETERS TABLE

Nominal power [W]:	41	Colour rendering index:	>80
Index:	990731	SDCM:	≤ 3
Colour temperature [K]:	3000	Power factor:	0.97
Light source:	LED module	Material of the body:	powder coated steel
Luminous flux [lm]:	3200	Ingress protection:	IP20
Optics:	black HE	Mounting version:	surface (magnet ver.)
Rated power of the luminaire [W]:	44.80	Working temperature [°C]:	from -20 to +35
Version:	2x1	Category type:	louvres
Supply voltage [V]:	220 - 240	Category of application:	commercial facilities, educational institutions
Colour of the body:	black mat	LED lifespan L70B50 [h]:	132000
Frequency [Hz]:	50 - 60	LED lifespan L80B20 [h]:	84000
Dimensions (H/W/T/S) [mm]:	595/300/36	LED lifespan L90B10 [h]:	42000
Luminous efficacy [lm/W]:	67	CE certificate:	<a href="#">354/2023</a>
Energy efficiency class:	G	Manual:	<a href="#">Download PDF</a>
Electrical protection class:	II		

Card creation date: 08 January 2025

The company reserves the right to make design changes or upgrades in the presented product. Product data sheet does not constitute an offer. \* Parameter tolerance is +/- 10%



This product is a subject to electric and electronic waste equipment regulations (WEEE).



Certificate CE - Nr: 354/2023