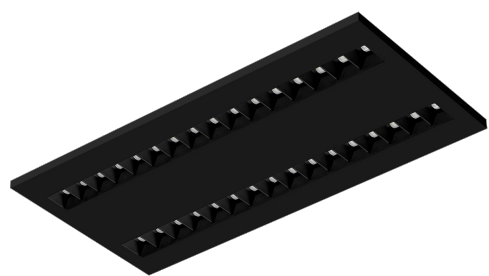


TERRA 2 LED N-MAG 595X300MM X2 2800LM 830 BLACK MAT STRUCTURE (36W)

DETAILED CARD



TECHNICAL PARAMETERS

Index:	990724
Ingress protection:	IP20
Nominal power [W]:	36
Luminous flux [lm]*:	2800
Colour rendering index:	>80
SDCM:	≤ 3
Material of the body:	powder coated steel
Mounting version:	surface (magnet ver.)
Dimensions (H/W/T/S) [mm]:	595/300/36

CHARACTERISTICS

LED luminaire with high total luminous Flux. Made of powder-coated white steel sheet. The luminaire has a patented HE reflector installed, which ensures efficiency and effectively eliminates glare. Available mounting versions: surface mounted, surface mounted on neodymium magnets (magnet ver. / N-MAG), flush-mounted in modular or KG ceilings (using an adapter) or suspended. In the surface-mounted version, solutions influencing the speed and safety of installation were used. In addition, the versions with neodymium magnets shorten the installation time of surface-mounted versions to an absolute minimum.

APPLICATION

General purpose surface mounted luminaire for indoor application in offices or other utility rooms. Appropriate as the main light source even when the work requires eyesight concentration.

TERRA 2 LED N-MAG 595X300MM X2 2800LM 830 BLACK MAT STRUCTURE (36W)

DETAILED CARD

TECHNICAL PARAMETERS TABLE

Index:	990724
Light source:	LED module
Nominal power [W]:	36
Rated power of the luminaire [W]:	39.80
Supply voltage [V]:	220 - 240
Frequency [Hz]:	50 - 60
Luminous flux [lm]:	2800
Luminous efficacy [lm/W]:	70
Energy efficiency class:	G
Electrical protection class:	II
Colour temperature [K]:	3000
Colour rendering index:	>80
SDCM:	≤ 3
Power factor:	0.96
Optics:	black HE

Material of the body:	powder coated steel
Colour of the body:	black mat
Dimensions (H/W/T/S) [mm]:	595/300/36
Ingress protection:	IP20
Mounting version:	surface (magnet ver.)
Working temperature [°C]:	from -20 to +35
Category type:	louvres
Category of application:	commercial facilities, educational institutions
Version:	2x1
LED lifespan L70B50 [h]:	132000
LED lifespan L80B20 [h]:	84000
LED lifespan L90B10 [h]:	42000
CE certificate:	354/2023
Manual:	Download PDF

Card creation date: 03 March 2025

The company reserves the right to make design changes or upgrades in the presented product. Product data sheet does not constitute an offer. * Parameter tolerance is +/- 10%

 This product is a subject to electric and electronic waste equipment regulations (WEEE).

 Certificate CE - Nr: 354/2023