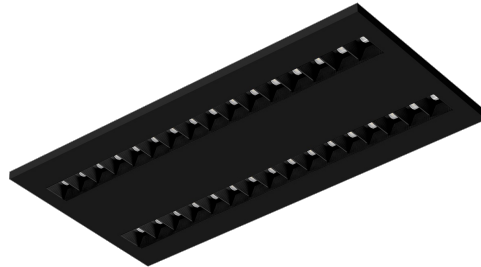


TERRA 2 LED N-MAG 595X300MM X2 1900LM 840 MATTE BLACK STRUCTURE (20W)

DETAILED CARD



TECHNICAL PARAMETERS

Index:	990656
Ingress protection:	IP20
Nominal power [W]:	20
Luminous flux [lm]*:	1900
Colour rendering index:	>80
SDCM:	≤ 3
Material of the body:	powder coated steel
Mounting version:	surface (magnet ver.)
Dimensions (H/W/T/S) [mm]:	595/300/36

CHARACTERISTICS

LED luminaire with high total luminous Flux. Made of powder-coated white steel sheet. The luminaire has a patented HE reflector installed, which ensures efficiency and effectively eliminates glare. Available mounting versions: surface mounted, surface mounted on neodymium magnets (magnet ver. / N-MAG), flush-mounted in modular or KG ceilings (using an adapter) or suspended. In the surface-mounted version, solutions influencing the speed and safety of installation were used. In addition, the versions with neodymium magnets shorten the installation time of surface-mounted versions to an absolute minimum.

APPLICATION

General purpose surface mounted luminaire for indoor application in offices or other utility rooms. Appropriate as the main light source even when the work requires eyesight concentration.

TERRA 2 LED N-MAG 595X300MM X2 1900LM 840 MATTE BLACK STRUCTURE (20W)

DETAILED CARD

TECHNICAL PARAMETERS TABLE

Index:	990656	Material of the body:	powder coated steel
Light source:	LED module	Colour of the body:	black mat
Nominal power [W]:	20	Dimensions (H/W/T/S) [mm]:	595/300/36
Rated power of the luminaire [W]:	22.70	Ingress protection:	IP20
Supply voltage [V]:	220 - 240	Mounting version:	surface (magnet ver.)
Frequency [Hz]:	50 - 60	Working temperature [°C]:	from -20 to +35
Luminous flux [lm]:	1900	Category type:	louvres
Luminous efficacy [lm/W]:	84	Category of application:	commercial facilities, educational institutions
Energy efficiency class:	F	Version:	2x1
Electrical protection class:	II	LED lifespan L70B50 [h]:	132000
Colour temperature [K]:	4000	LED lifespan L80B20 [h]:	84000
Colour rendering index:	>80	LED lifespan L90B10 [h]:	42000
SDCM:	≤ 3	CE certificate:	354/2023
Power factor:	0.95	Manual:	Download PDF
Optics:	black HE		

Card creation date: 31 August 2023

The company reserves the right to make design changes or upgrades in the presented product. Product data sheet does not constitute an offer. * Parameter tolerance is +/- 10%



This product is a subject to electric and electronic waste equipment regulations (WEEE).



Certificate CE - Nr: 354/2023